



**Application**

- Wastewater drainage in factories, construction sites and commercial facilities
- Drainage system in municipal sewage treatment plants
- Drainage station in residential quarters
- Municipal projects
- Methane pools and field irrigation in countryside

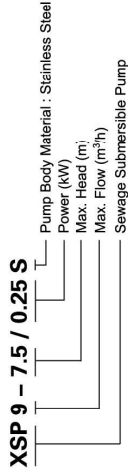
**Pump**

- Max. immersion depth: 5 m
- Max. liquid temperature: +40°C
- Liquid pH value: 4 – 10
- Liquid kinematic viscosity:  $7 \times 10^{-2} - 23 \times 10^{-6} \text{ m}^2/\text{s}$
- Max. liquid density:  $1.2 \times 10^3 \text{ kg/m}^3$

**Motor**

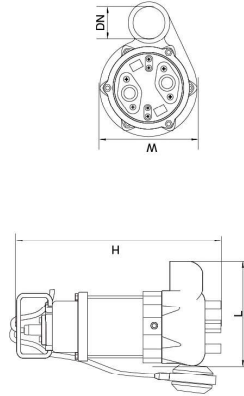
- Copper winding
- Built-in thermal protector
- Stainless steel welded shaft
- Insulation class: B
- Protection class: IP68

**Identification Codes**



**Technical Data**

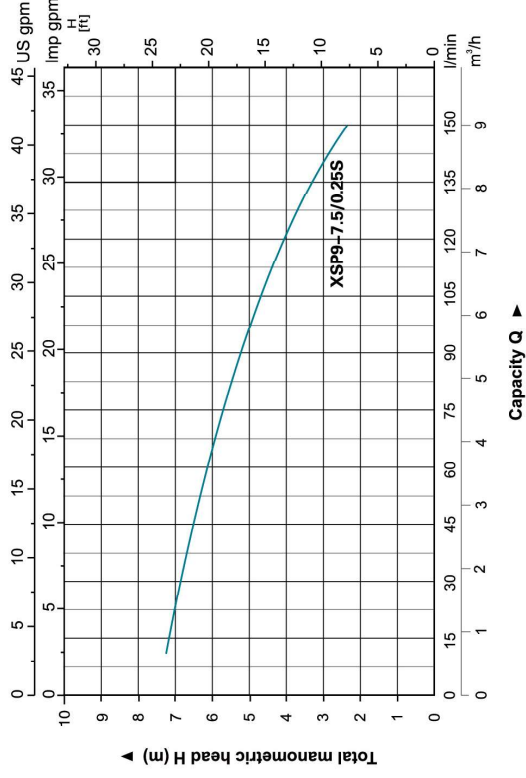
| Model          | Power |      | Voltage (V/Hz) | Max flow (l/min) | Max flow (m <sup>3</sup> /h) | Max head (m) | Max dia of particle (mm) | GW (kgs) | Packing size (mm) | Quantity (PCS/20' TEU) |
|----------------|-------|------|----------------|------------------|------------------------------|--------------|--------------------------|----------|-------------------|------------------------|
|                | (kW)  | HP   |                |                  |                              |              |                          |          |                   |                        |
| XSP9-7.5/0.25S | 0.25  | 0.33 | 220/50         | 150              | 185                          | 7.5          | 15                       | 10.5     | 185x180x380       | 2110                   |



**Dimension**

| Model          | DN (mm) | L (mm) | W (mm) | H (mm) |
|----------------|---------|--------|--------|--------|
| XSP9-7.5/0.25S | 1 1/4"  | 165    | 130    | 360    |

**Hydraulic Performance Curves**



**Materials Table**

| No. | Part              | Material        | No. | Part              | Material        |
|-----|-------------------|-----------------|-----|-------------------|-----------------|
| 1   | Belt              | Stainless steel | 25  | Stator            | Stainless steel |
| 2   | Stretching washer | Stainless steel | 26  | Screw             | Stainless steel |
| 3   | Washer            | Stainless steel | 27  | Stretching washer | Stainless steel |
| 4   | Handle            | Stainless steel | 28  | Thermal protector | Stainless steel |
| 5   | Screw             | Stainless steel | 29  | Wave washer       | 65Mn            |
| 6   | Cable             | Stainless steel | 30  | Ball bearing      |                 |
| 7   | Flange            | Stainless steel | 31  | Rotor             |                 |
| 8   | Cable protector   | CR              | 32  | Ball bearing      |                 |
| 9   | Capacitor cover   | Stainless steel | 33  | Rubber washer     | FKM             |
| 10  | Screw             | Stainless steel | 34  | Screw             | Stainless steel |
| 11  | Cable presser     | Stainless steel | 35  | O-ring            | FKM             |
| 12  | Protector         | FKM             | 36  | Connection part   | Stainless steel |
| 13  | O-ring            | FKM             | 37  | Mechanical seal   | Ceramic/Carbon  |
| 14  | Capacitor         | FKM             | 38  | O-ring            | FKM             |
| 15  | Rubber washer     | FKM             | 39  | Oil chamber cover | Stainless steel |
| 16  | Cable             | Stainless steel | 40  | Gasket            | Stainless steel |
| 17  | Stretching washer | Stainless steel | 41  | Screw             | Stainless steel |
| 18  | Washer            | Steel           | 42  | O-ring            | FKM             |
| 19  | Press plate       | Steel           | 43  | Impeller          | Stainless steel |
| 20  | Cable holder      | Steel           | 44  | Nut               | Stainless steel |
| 21  | Screw             | CUZ-40          | 45  | Connector         | ABS             |
| 22  | Stretching washer | 65Mn            | 46  | O-ring            | FKM             |
| 23  | Washer            | CUZ-40          | 47  | Pump body         | Stainless steel |
| 24  | Nut               | Stainless steel |     |                   |                 |

